

WE ARE CREATING A BETTER KCP THROUGH INNOVATION AND CHALLENGES



KCP

Contents

Overview

About KCP Co., Ltd.	03
Global	04
Facility	05

Concrete pumps

Ultimate Performance	06
World's first	07
Placing boom	08
Folding system	09
Stabilization	11
Outrigger types	12
Pumping unit	13
Main composition	14

Line up

Boom pumps	15
Trailer pumps	19
Line pumps	20
Placing booms	21

Service

Efforts to provide advanced services	24
--------------------------------------	----

Worldwide KCP

Worldwide KCP	25
America	26
Europe	27
Africa	30
West Asia	30
Oceania	32
East Asia	32
Eurasia	34
Korea	35

About KCP CO., LTD.



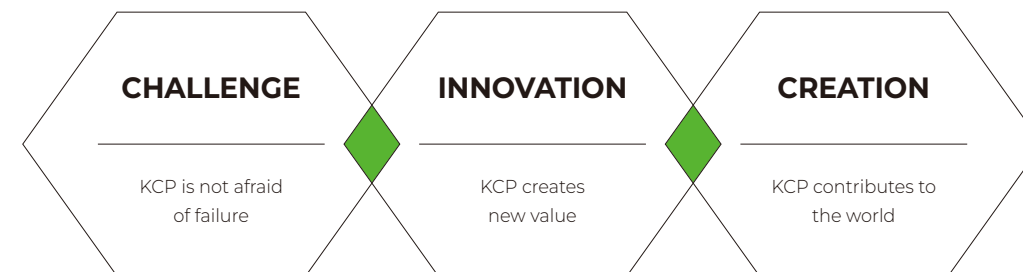
KCP Co., Ltd. possesses design and manufacturing technology for concrete pumps, construction machinery, and special-purpose vehicles, and has simplified and lightweight structures to provide excellent durability and efficiency. In addition, it is recognized by consumers as its maintenance costs are economical and its failure rate is low.

Currently, KCP Co., Ltd. is actively exporting its products to over 50 countries around the world, including the United States, Canada, Europe, Australia, Russia, Saudi Arabia, Japan, and the Philippines.

Company Profile

Company Name KCP Co., Ltd	Establishment Year 2002	CEO Yun Young Gon
Production Capacity 800 units per year	No. of Employees 210	Domestic Market Share No. 1 Since 2010

Management Policy

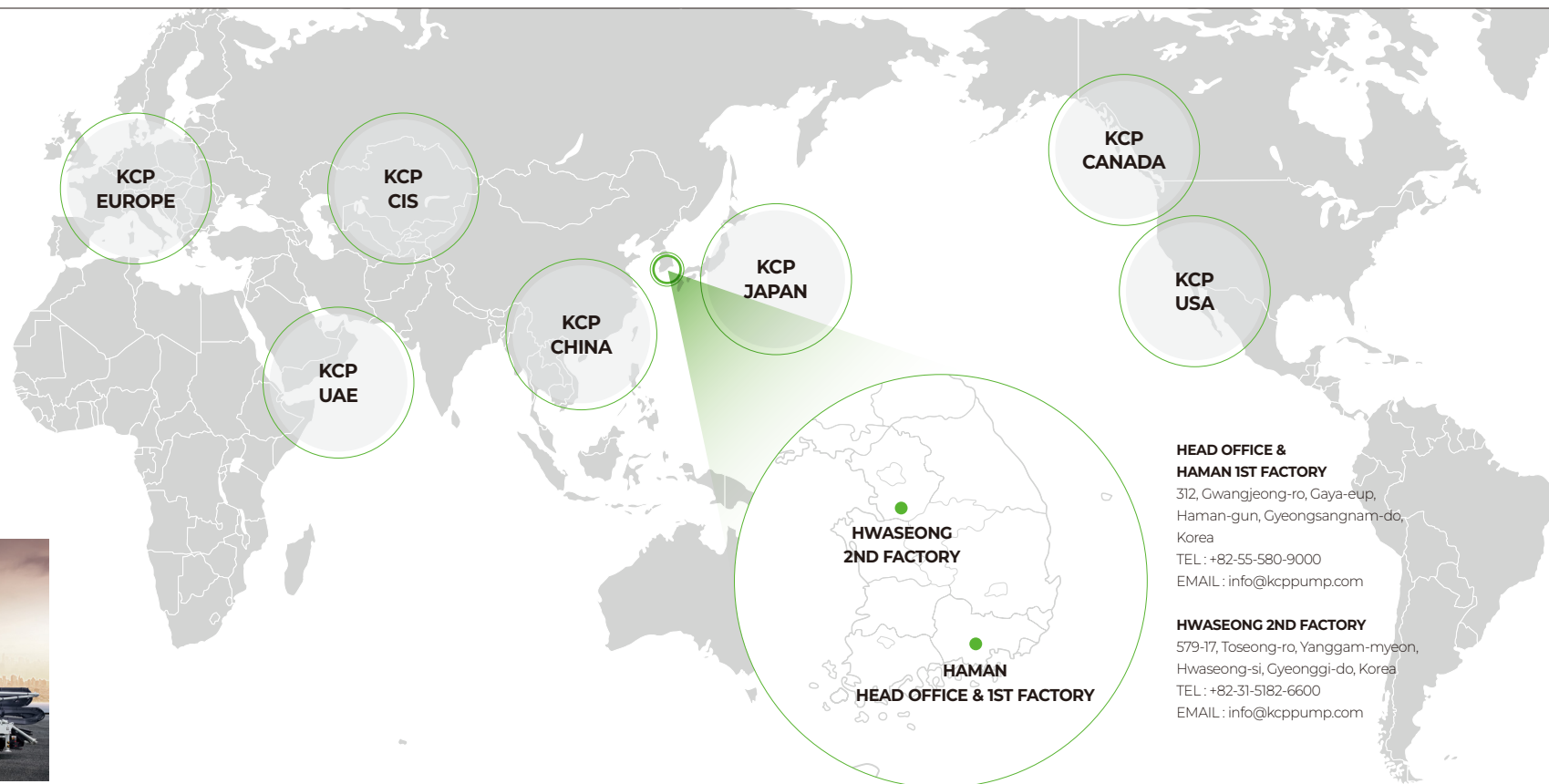


**WE ARE CREATING A BETTER KCP THROUGH
INNOVATION AND CHALLENGES**

Global

50

KCP CONCRETE
PUMPS ARE
LOVED IN OVER
50 COUNTRIES



KCP CANADA

201-5769 Production way, Langley, B.C.
Canada, V3A 4N5

KCP USA

KCP America INC. 2820 N Lamb Blvd,
Las Vegas, NV, 89115 USA

KCP EUROPE

IZ-NÖ Süd, Strasse 2b, Objekt M10B, 2351
Wiener Neudorf, Austria

KCP CIS

100084 Tashkent, Republic of Uzbekistan, Amir Temur Avenue,
International Business Center 107-B

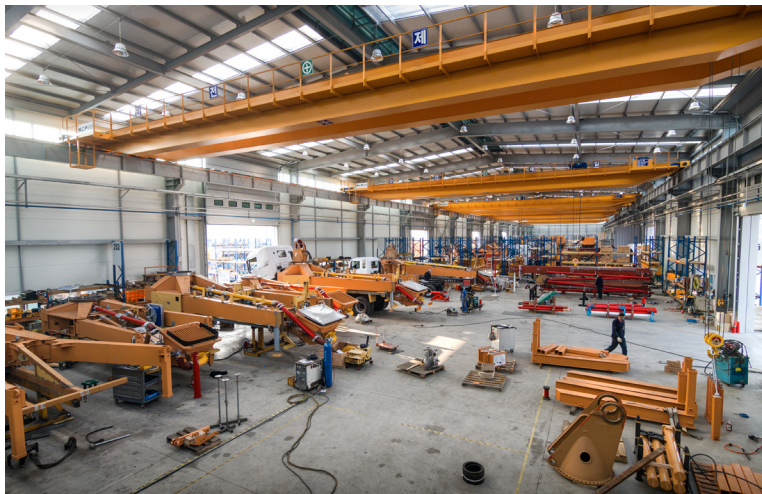
KCP CHINA

Korea park service center 205 room, Economic development zone,
Yancheng city, Jiangsu province, 224007, China

KCP JAPAN

260-0044 Fratsu-K103, 2-21-1 Matsunami, Chuouoku,
Chibashi, Chibaken, Japan

Facility



HEAD OFFICE & HAMAN 1ST FACTORY



HWASEONG 2ND FACTORY



R&D Center
(Haman / Hwaseong / Daegeon)



Test Center
(Haman / Hwaseong)



Service Center
(Haman / Hwaseong)



Overseas Service Team

Certification



A company that strengthens its own growth capabilities, secures future growth engines and competitive advantages through continuous innovation, and expands market dominance by competing, trading, and cooperating with global companies in markets with high growth potential based on independence in business relationships.



Domestic companies selected by the Public Procurement Service to support entry into overseas procurement markets in accordance with Article 3-8 of the Procurement Business Act.

* G-PASS: Government Performance ASSured



The letters 'CE' appear on many products traded on the extended Single Market in the European Economic Area (EEA). They signify that products sold in the EEA have been assessed to meet high safety, health, and environmental protection requirements.

ISO 9001, ISO 14001

ISO 9001 is an international standard that specifies the requirements for a quality management system applicable to all industrial sectors and activities. ISO 9001 certification is a system in which a third party objectively certifies that the product or service realization system meets specified requirements and is operating effectively.

ISO 14001 is an international standard for environmental management systems that can be applied to all industrial sectors and activities. Companies can efficiently manage environmental risks by systematically identifying, evaluating, managing, and improving environmental aspects through an environmental management system.



Hold more than 30 invention patents

Ultimate performance

We build a pump that makes your life easier

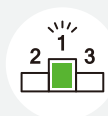
KCP Concrete Pumps are the most user-friendly on the market

KCP Open-Loop Circuit System generates less heat on hydraulic oil, making it easy to maintain and offering long service life

KCP Boom Structures feature fewer curves in the boom system, resulting in less resistance during pumping



Best design/
production technology



No. 1 Concrete equipment
manufacturer in Korea



High fuel efficiency
(Save up to 20%)



Exports to more than 50
countries around the world

Rexroth
Bosch Group
Main Pump

HB Hydraulic
Remote Control

STRENX
PERFORMANCE STEEL
Steel

HAWA
HYDRAULIK
Control Valve



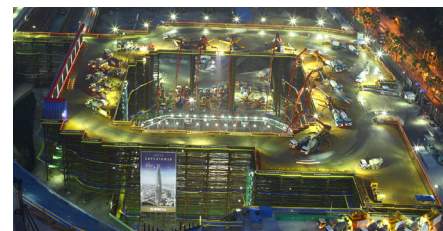
World's first

KCP Co., Ltd. manufactured the world's first 75m concrete pumps

We developed the world's first 75m large concrete pumps to meet the need for concrete pouring at Korea's harsh, large-scale construction sites.

In Korea, large concrete pumps over 50m long account for more than 50% of the total 7,000 units, and KCP Co., Ltd. is far ahead in terms of production and operation know-how.

In addition, our market share in North America is rising rapidly based on our accumulated production experience and excellent technology.



Lotte World Tower

Large-scale pouring at the Lotte World Tower construction site with a height of 554.5m



LNG production base

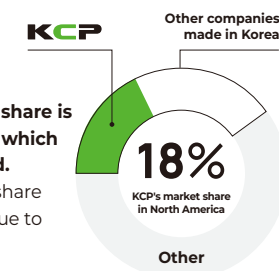
Large-scale pouring at a construction site on an 890,000 m² site in Dangjin, South Chungcheong Province

1st

75m concrete pumps



40% of the North American market share is made in Korea, of which 18% is KCP Co., Ltd. Currently, market share continues to rise due to strong sales.



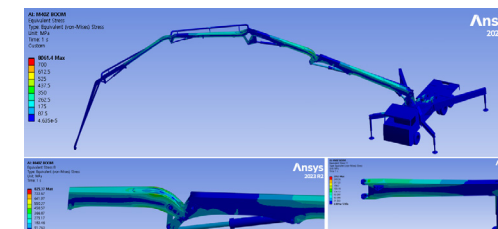
Placing boom

Safe and stable boom system

KCP's equipped booms are designed through rigorous testing to maximize the structural resistance and fatigue strength of each section. Therefore, concrete is delivered safely and stably, ensuring excellent reliability in work.

Stiffness and lightweight

Through advanced design techniques and repeated simulations, the boom structure was analyzed and verified to achieve optimal rigidity and weight reduction. So it's built safer, stronger and lighter.



Lighter

Fuel efficiency has improved by 20%

Stronger

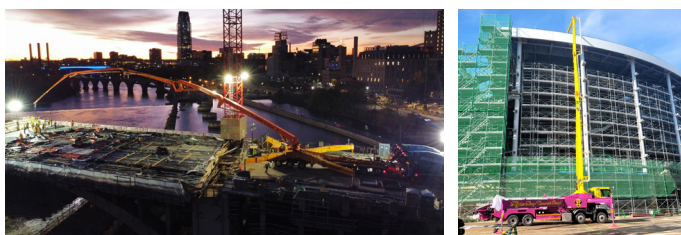
Safety has increased

Safer

It is advantageous for long distance pouring

Optimized for any construction environment

The operational versatility of the boom gives you the flexibility to quickly extend and position the boom perfectly on any construction site around the world.



STRENX® posco
PERFORMANCE STEEL

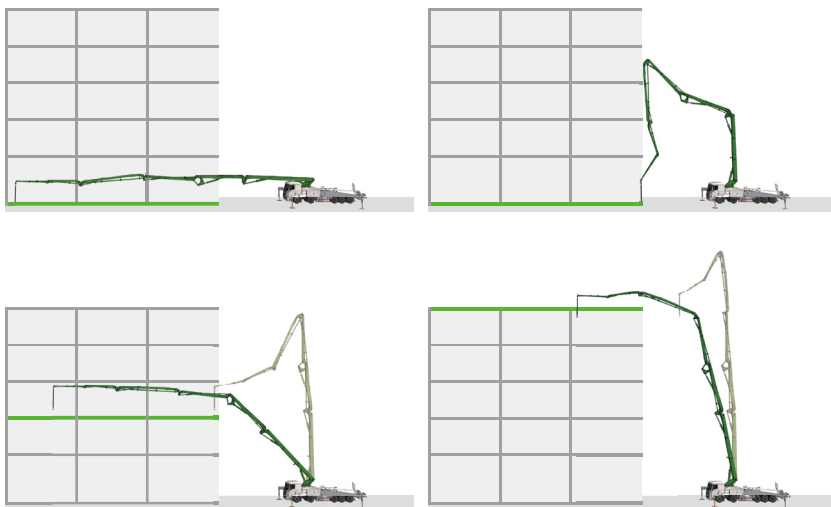
All of KCP's booms are manufactured using high-strength steel plates and steel from STRENX® and POSCO Co., Ltd.

Folding system

The section's structural design allows the boom to extend longer and faster, ensures perfect positioning, and is easy to operate, easy to operate. Among the three types of booms, 4, 5, and 6 Section, you can increase economic efficiency by selecting the type that is suitable for the actual work site.

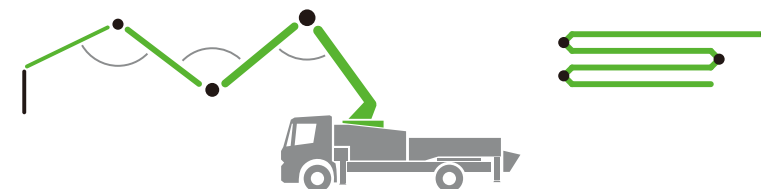
Z type

The Z type fold boom is basic for high-rise and low-rise, long-distance and short-distance pouring, and can even enter the interior of a building, allowing optimal use of space in various work areas.



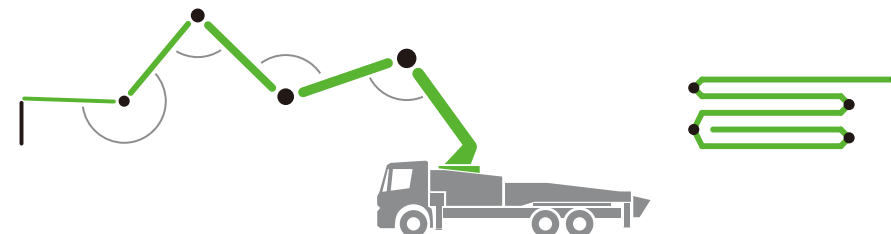
4 Section

K20, K24, K27



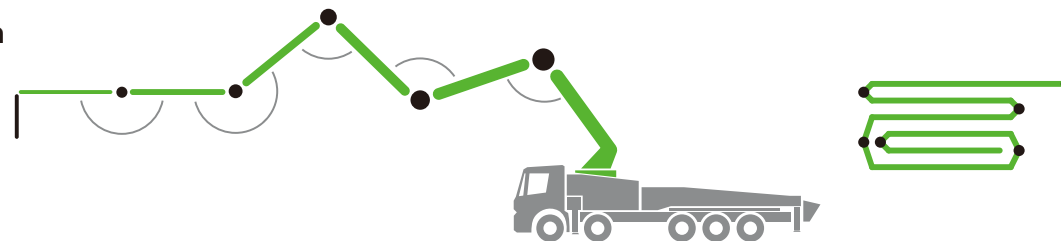
5 Section

K31, K37, K41, K42, K43,
K46, K48, K75



6 Section

K52, K56, K61,
K65, K70



Folding system

RZ type

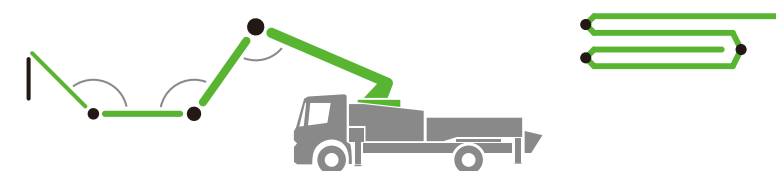
The boom of the RZ type fold is manufactured in 4 sections and is designed to be more compact than the Z type, optimizing it for construction sites with limited space. This means equipment can be easily inserted into buildings for installation, and extending the boom into the building interior is facilitated at job sites where the building and equipment are close.

Therefore, utilizing both Z type and RZ type simultaneously enhances efficiency and operability across a wider range of construction sites, providing significant benefits to businesses.



4 Section

K20, K24

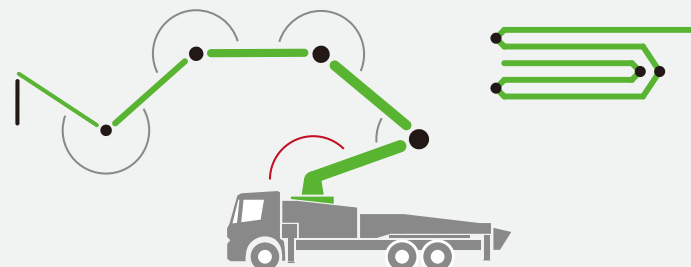


Overhead RZ type

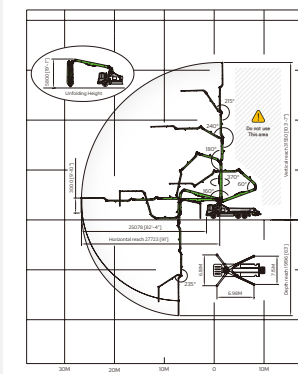
The overhead RZ type can extend the boom into the interior of a building with just the operation of the first boom, as it operates 90 degrees forward and 70 degrees backward. This enhances user convenience and reduces work time.

5 Section

K33



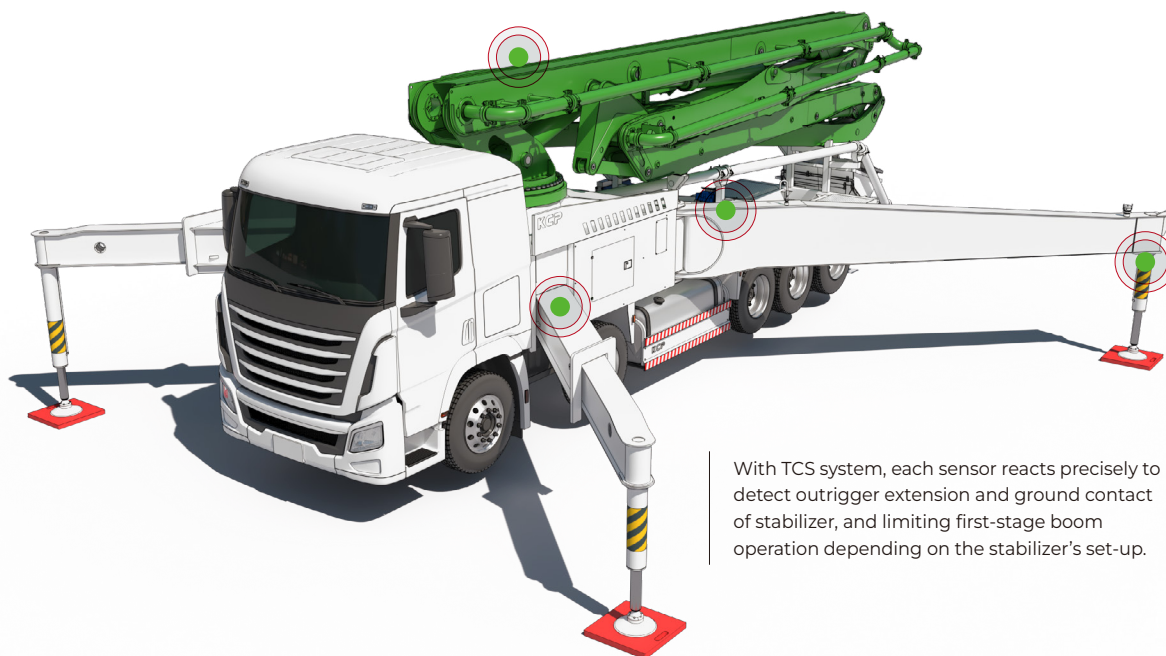
Working diagram



Stabilization

All of KCP's outriggers are designed to adapt effectively to various work environments, including narrow spaces and slopes. They expand quickly and efficiently, reducing overall work time. Additionally, it features a warning and boom operation limit function (TCS*) to prevent tipping over, ensuring safe operation.

* TCS: Optional specifications (Equipped on all models for European markets)



With TCS system, each sensor reacts precisely to detect outrigger extension and ground contact of stabilizer, and limiting first-stage boom operation depending on the stabilizer's set-up.

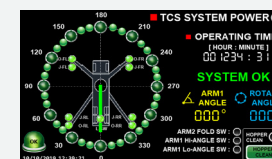
TCS (Turning Control System)



TCS (Turning Control System) is KCP's specialized safety device designed to prevent accidents that may occur by improper set-up of machine on job sites. It alerts the operator with an alarm if the outriggers are not fully extended or the stabilizers are not making the ground contact.

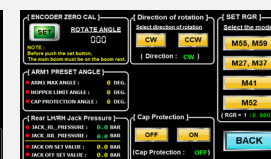
Key features of TCS

- Outrigger extension detection
- Ground detection
- Restrictions on boom operation
- Limit dangerous turning angles
- Hopper cleaning mode
- Hopper operation limits
- Sensor failure notification



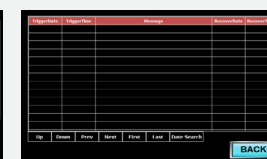
Main screen

You can quickly check the entire system thanks to the dashboard



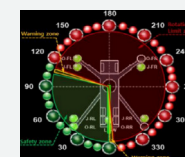
System management

User can set



System error and alarm list

Identify problems by checking errors and alarms



Rotation regulation display

Visualize rotation regulations on display to aid understanding



Outrigger display

Outrigger extension and jack seating status can be checked

Outrigger types

The stabilization system is equipped with eight types of outriggers in the optimal combination of front and rear depending on the size of the boom.

Front Outrigger

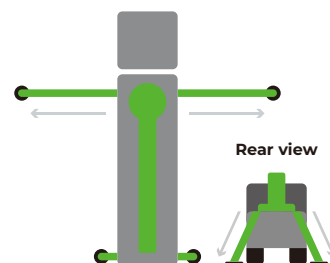
Available in six types: horizontal (single), telescopic X style (single, double, triple), and telescopic swing (double, triple).

Rear Outrigger

Available in three types: diagonal, horizontal, and swing.

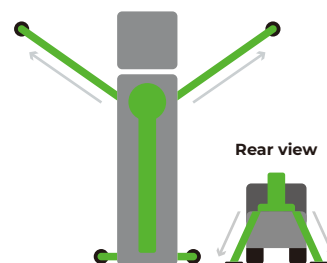
Front : 1 horizontal T style
Rear : 1 diagonal A style

K20



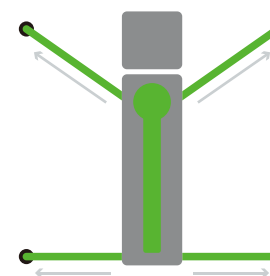
Front : 1 telescopic X style
Rear : 1 diagonal A style

K24



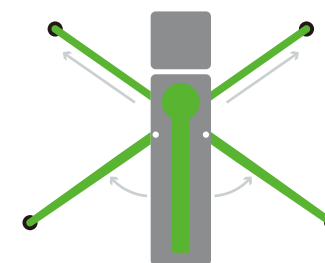
Front : 1 telescopic X style
Rear : 1 horizontal T style

K27, K31



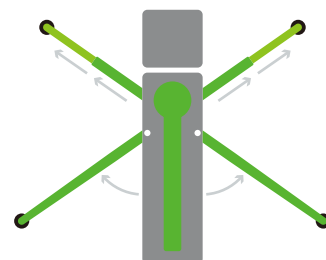
Front : 1 telescopic X style
Rear : Swing

K37, K41, K43



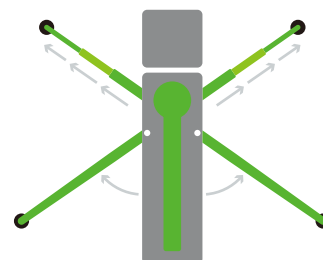
Front : 2 telescopic X style
Rear : Swing

K46, K48, K52, K56



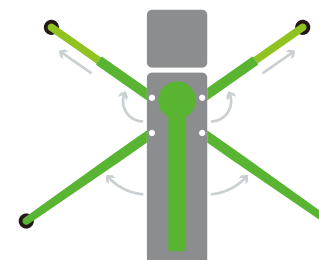
Front : 3 telescopic X style
Rear : Swing

K61



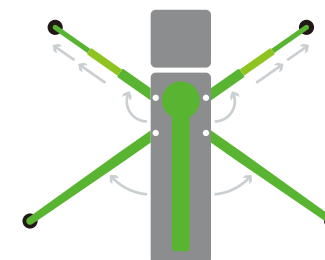
Front : 2 telescopic Swing
Rear : Swing

K65



Front : 3 telescopic Swing
Rear : Swing

K70, K75

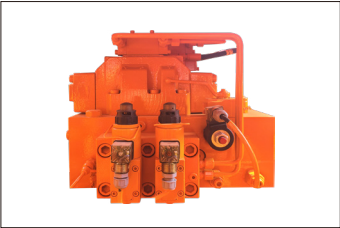
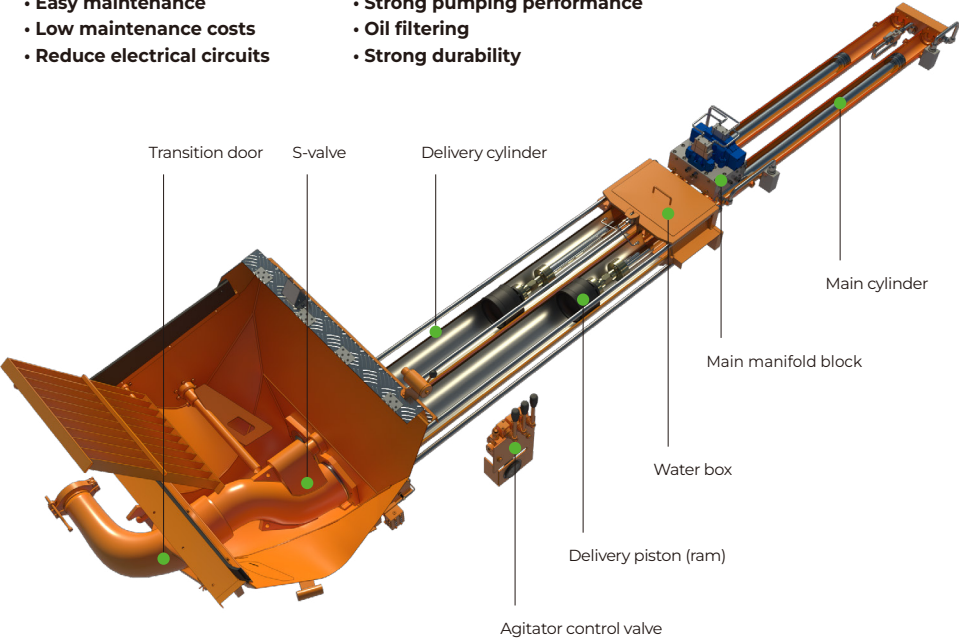


Pumping unit

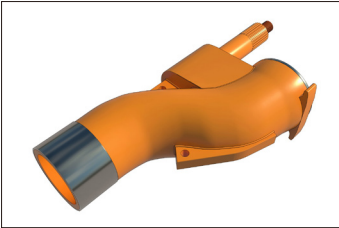
Open loop hydraulic system

The open hydraulic system has a simple structure, making it easy to maintain, and the PTO power transmission is good, so it is very efficient as it pumps various types of concrete strongly even at low RPM. Additionally, power efficiency generates less heat and reduces wear, extending lifespan.

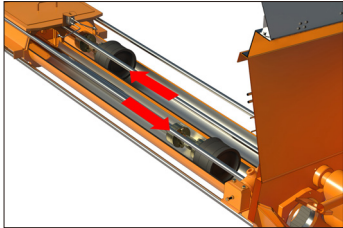
- Easy maintenance
 - Low maintenance costs
 - Reduce electrical circuits
- Strong pumping performance
 - Oil filtering
 - Strong durability



Main manifold block
The configuration is simplified and designed as a single block, which reduces breakdowns and makes maintenance, pressure setting, and emergency measures easy.



S-valve
It is designed to withstand strong pressure and friction, helping to reduce maintenance costs by minimizing wear on various types of concrete.

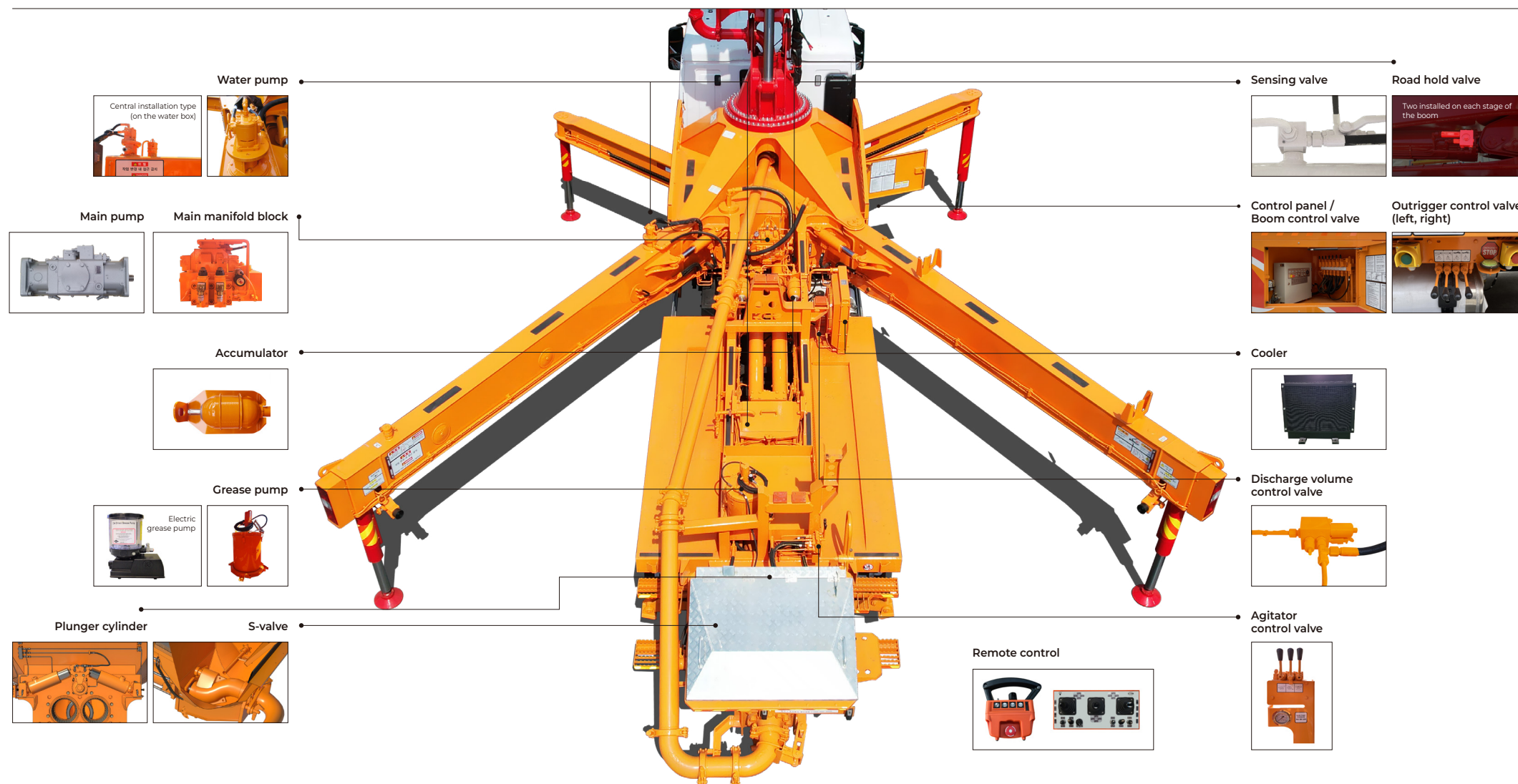


Piston (ram)
The precision-machined piston reduces vibration, keeps the boom still, and has good durability and performance to continuously and effectively compress and transport concrete for smooth discharge.

Specification

Application (Model)	K19, K20	K24, K27	K30~K38	K40~K75
Maximum output	80m³/h	120m³/h	150m³/h	170m³/h
Concrete cylinder	Ø230×1,100mm	Ø230×1,400mm	Ø230×1,800mm	Ø230×2,100mm
Stroke per minute	29	34	34	33
Concrete pressure	Max. 80bar	Max. 69bar	Max. 63bar	Max. 87bar
Hopper capacity	0.6m³			
S-valve	Ø200×Ø180			
Hydraulic pump	Rexroth-A11VLO190	Rexroth-A11VLO190	Rexroth-A11VLO260	Rexroth-A20VLO190
Cycling system	Hydraulic with manual overrides			
Max. aggregate size	40mm			

Main composition



Boom pumps

KCP20RZ



Boom Specifications

Vertical reach	19.4m
Horizontal reach	16m
Reach from front of truck	13m
Outrigger spread-front	3m
Outrigger spread-rear	2.6m
Total weight	< 13ton

Pump Specifications

Maximum output	90m³/h
Stroke per minute	34
Concrete pressure	Max. 80bar
Hydraulic pump	Rexroth-A11VLO190



KCP24RZ



Boom Specifications

Vertical reach	23.3m
Horizontal reach	19.3m
Reach from front of truck	16.6m
Outrigger spread-front	4.8m
Outrigger spread-rear	2.7m
Total weight	< 18ton

Pump Specifications

Maximum output	120m³/h
Stroke per minute	35
Concrete pressure	Max. 80bar
Hydraulic pump	Rexroth-A11VLO190



KCP27Z



Boom Specifications

Vertical reach	26.3m
Horizontal reach	22.3m
Reach from front of truck	19.4m
Outrigger spread-front	5.8m
Outrigger spread-rear	3.8m
Total weight	< 18ton

Pump Specifications

Maximum output	120m³/h
Stroke per minute	34
Concrete pressure	Max. 80bar
Hydraulic pump	Rexroth-A11VLO190



KCP31ZXT5

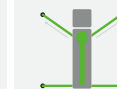


Boom Specifications

Vertical reach	30.6m
Horizontal reach	26.5m
Reach from front of truck	23.4m
Outrigger spread-front	5.7m
Outrigger spread-rear	5.6m
Total weight	< 22ton

Pump Specifications

Maximum output	150m³/h
Stroke per minute	34
Concrete pressure	Max. 80bar
Hydraulic pump	Rexroth-A11VLO260



Boom pumps

KCP33RZ5



Overhead
RZ type



Boom Specifications

Vertical reach	31.6m
Horizontal reach	27.7m
Reach from front of truck	25m
Outrigger spread-front	6.18m
Outrigger spread-rear	7.15m
Total weight	< 24ton

Pump Specifications

Maximum output	150m³/h
Stroke per minute	34
Concrete pressure	Max. 63bar
Hydraulic pump	Rexroth-A11VLO260

KCP37ZX5



Boom Specifications

Vertical reach	36.3m
Horizontal reach	32.1m
Reach from front of truck	28.9m
Outrigger spread-front	5.7m
Outrigger spread-rear	6.7m
Total weight	< 24ton

Pump Specifications

Maximum output	150m³/h
Stroke per minute	34
Concrete pressure	Max. 80bar
Hydraulic pump	Rexroth-A11VLO260



KCP41ZX5



Boom Specifications

Vertical reach	40.1m
Horizontal reach	36.3m
Reach from front of truck	33.2m
Outrigger spread-front	6.1m
Outrigger spread-rear	9.1m
Total weight	< 32ton

Pump Specifications

Maximum output	170m³/h
Stroke per minute	33
Concrete pressure	Max. 80bar
Hydraulic pump	Rexroth-A11VLO260



KCP43ZX5

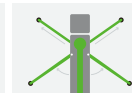


Boom Specifications

Vertical reach	42.2m
Horizontal reach	37.2m
Reach from front of truck	33.8m
Outrigger spread-front	6.2m
Outrigger spread-rear	9.1m
Total weight	< 32ton

Pump Specifications

Maximum output	170m³/h
Stroke per minute	33
Concrete pressure	Max. 85bar
Hydraulic pump	Rexroth-A20VLO190



Boom pumps

KCP46ZX5



Boom Specifications

Vertical reach	45.1m
Horizontal reach	40.0m
Reach from front of truck	36.8m
Outrigger spread-front	8.8m
Outrigger spread-rear	9.5m
Total weight	< 35ton

Pump Specifications

Maximum output	170m³/h
Stroke per minute	33
Concrete pressure	Max. 85bar
Hydraulic pump	Rexroth-A20VLO190



KCP48ZX5



Boom Specifications

Vertical reach	47.4m
Horizontal reach	43.3m
Reach from front of truck	40.4m
Outrigger spread-front	8.9m
Outrigger spread-rear	10.1m
Total weight	< 37ton

Pump Specifications

Maximum output	170m³/h
Stroke per minute	33
Concrete pressure	Max. 85bar
Hydraulic pump	Rexroth-A20VLO190



KCP52ZX6



Boom Specifications

Vertical reach	51.2m
Horizontal reach	46m
Reach from front of truck	43m
Outrigger spread-front	9.1m
Outrigger spread-rear	10.6m
Total weight	< 40ton

Pump Specifications

Maximum output	170m³/h
Stroke per minute	33
Concrete pressure	Max. 85bar
Hydraulic pump	Rexroth-A20VLO190



KCP56ZX6



Boom Specifications

Vertical reach	55.3m
Horizontal reach	50.1m
Reach from front of truck	47.1m
Outrigger spread-front	9.1m
Outrigger spread-rear	12.9m
Total weight	< 43ton

Pump Specifications

Maximum output	170m³/h
Stroke per minute	33
Concrete pressure	Max. 85bar
Hydraulic pump	Rexroth-A20VLO190



Boom pumps

KCP61ZX6



Boom Specifications

Vertical reach	60.3m
Horizontal reach	55m
Reach from front of truck	51.5m
Outrigger spread-front	10.4m
Outrigger spread-rear	13.2m
Total weight	< 45ton

Pump Specifications

Maximum output	170m³/h
Stroke per minute	33
Concrete pressure	Max. 85bar
Hydraulic pump	Rexroth-A20VLO190

KCP65ZS6



Boom Specifications

Vertical reach	64.7m
Horizontal reach	59.2m
Reach from front of truck	55.6m
Outrigger spread-front	13.7m
Outrigger spread-rear	13.6m

Pump Specifications

Maximum output	170m³/h
Stroke per minute	33
Concrete pressure	Max. 85bar
Hydraulic pump	Rexroth-A20VLO190

KCP70ZS6



Boom Specifications

Vertical reach	68.5m
Horizontal reach	64.2m
Reach from front of truck	60.9m
Outrigger spread-front	13.7m
Outrigger spread-rear	13.6m

Pump Specifications

Maximum output	170m³/h
Stroke per minute	33
Concrete pressure	Max. 85bar
Hydraulic pump	Rexroth-A20VLO190

KCP75ZS5



Boom Specifications

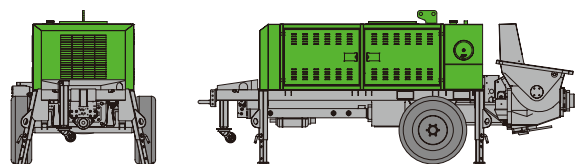
Vertical reach	75.1m
Horizontal reach	71.9m
Reach from front of truck	68.3m
Outrigger spread-front	15.1m
Outrigger spread-rear	15m

Pump Specifications

Maximum output	170m³/h
Stroke per minute	33
Concrete pressure	Max. 85bar
Hydraulic pump	Rexroth-A20VLO190

Trailer pumps

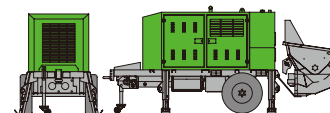
KTP0705



Maximum output	52m³/h
Concrete Pressure	70bar
Vertical distance	100m
Horizontal distance	175m
Weight	2,980kg

KTP0706 / KTP0706T

KTP0706

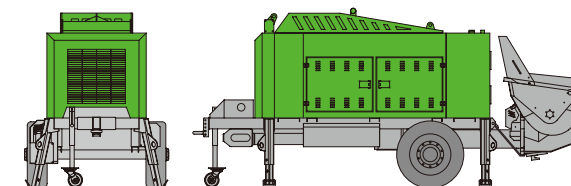


Maximum Output	65m³/h
Concrete Pressure	70bar
Vertical distance	100m
Horizontal distance	175m
Weight	3,900kg / 4,900kg (Crawler Type)

KTP0706T (Crawler Type)



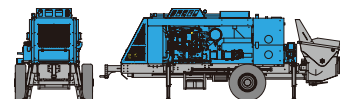
KTP1310



Maximum Output	64 / 96m³/h (Piston/Rod)
Concrete Pressure	126 / 83bar (Piston/Rod)
Vertical distance	180 / 115m (Piston/Rod)
Horizontal distance	315 / 205m (Piston/Rod)
Weight	5,380kg

KTP1714 / KTP1714T

KTP1714

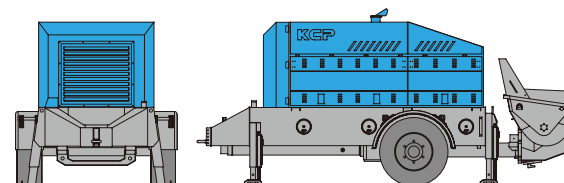


Maximum Output	88 / 155m³/h (Piston/Rod)
Concrete Pressure	172 / 95bar (Piston/Rod)
Vertical distance	240 / 135m (Piston/Rod)
Horizontal distance	425 / 235m (Piston/Rod)
Weight	7,000kg / 7,850kg (Crawler Type)

KTP1714T (Crawler Type)

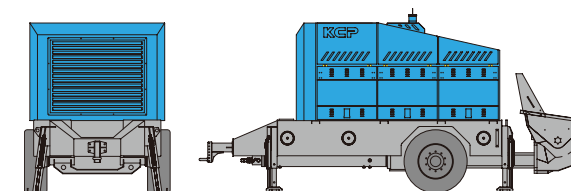


KTP2210



Maximum Output	67m³/h
Concrete Pressure	224bar
Vertical distance	315m
Horizontal distance	550m
Weight	7,540kg

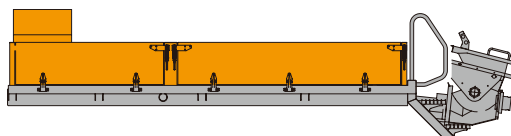
KTP2812



Maximum Output	105m³/h
Concrete Pressure	225bar
Vertical distance	320m
Horizontal distance	560m
Weight	10,500kg

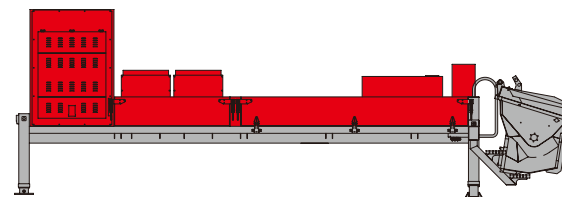
Line pumps

KML0706



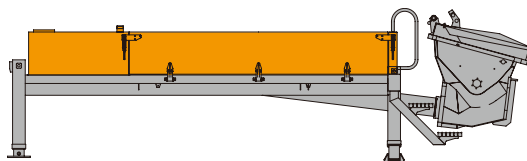
Maximum Output	63m³/h
Concrete Pressure	87bar
Vertical distance	125m
Horizontal distance	215m
Weight	3,360kg

KML2812 ENGINE



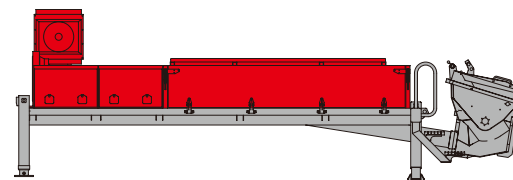
Maximum Output	112m³/h
Concrete Pressure	285bar
Vertical distance	405m
Horizontal distance	710m
Engine/HP	CAT-C7.1 / 300HP
Weight	6,700kg

KML1310



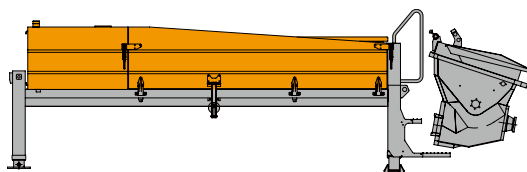
Maximum Output	64m³/h
Concrete Pressure	126bar
Vertical distance	180m
Horizontal distance	315m
Weight	5,280kg

KML2812 PTO



Maximum Output	75m³/h
Concrete Pressure	285bar
Vertical distance	405m
Horizontal distance	710m
Weight	6,500kg

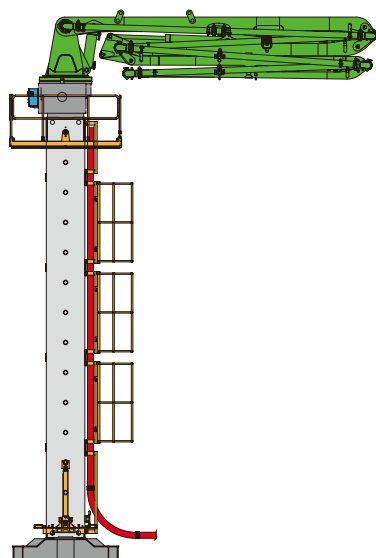
KML1714



Maximum Output	95m³/h
Concrete Pressure	172bar
Vertical distance	245m
Horizontal distance	430m
Weight	5,380kg

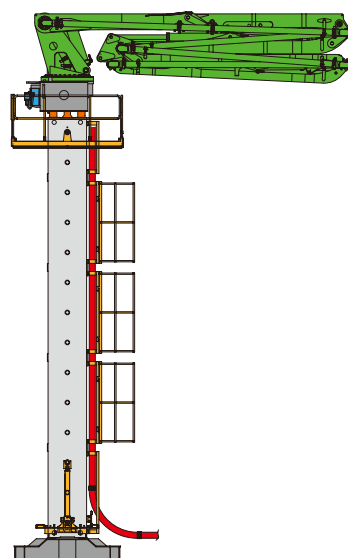
Placing booms

KB-M24Z



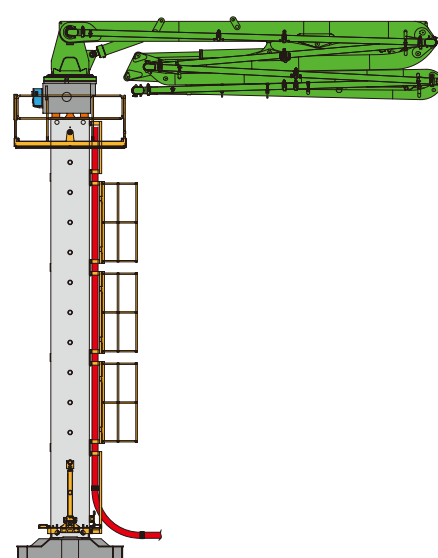
Boom type	4 Section Z type
Horizontal reach	23.2m
Depth reach	19.9m
Delivery line	125mm
End hose length	3m

KB-M27Z



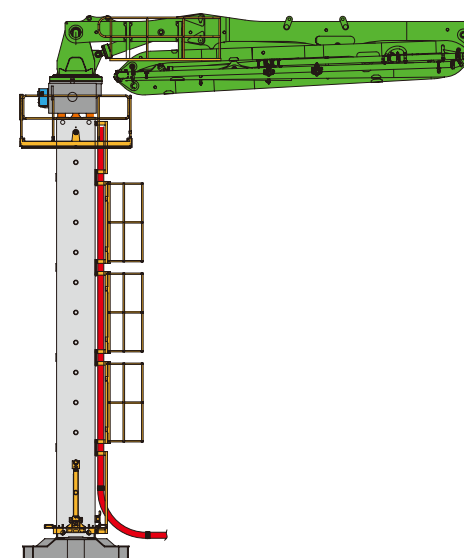
Boom type	5 Section R, Z type
Horizontal reach	26.3m
Depth reach	23.5m
Delivery line	125mm
End hose length	3m

KB-M28Z



Boom type	4 Section Z type
Horizontal reach	27.64m
Depth reach	23.1m
Delivery line	125mm
End hose length	3m

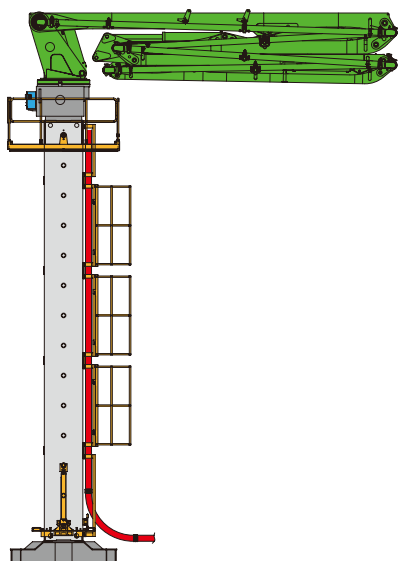
KB-M32R



Boom type	4 Section roll type
Horizontal reach	32.2m
Depth reach	27.7m
Delivery line	125mm
End hose length	3.5m

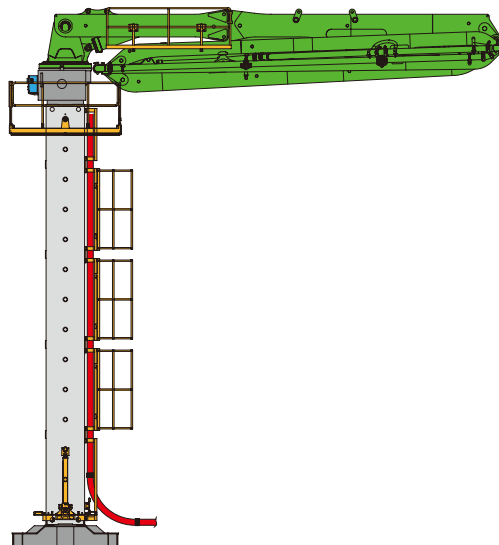
Placing booms

KB-M33Z



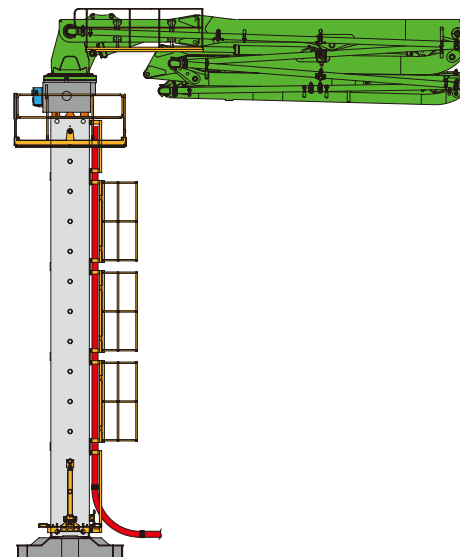
Boom type	5 Section R, Z type
Horizontal reach	32.1m
Depth reach	28.1m
Delivery line	125mm
End hose length	3.5m

KB-M36R



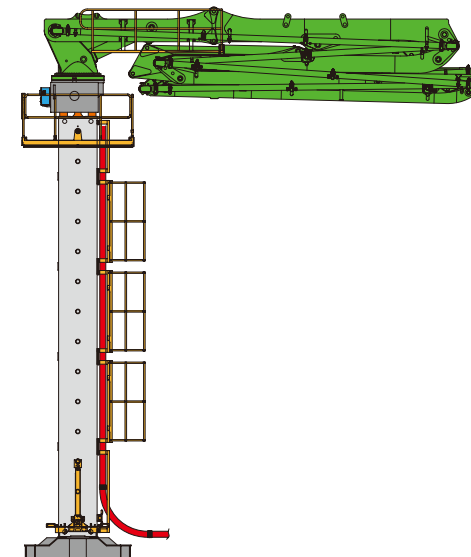
Boom type	4 Section roll type
Horizontal reach	35.7m
Depth reach	30.3m
Delivery line	125mm
End hose length	3.5m

KB-M36RZ



Boom type	5 Section R, Z type
Horizontal reach	35.57m
Depth reach	30.69m
Delivery line	125mm
End hose length	3.5m

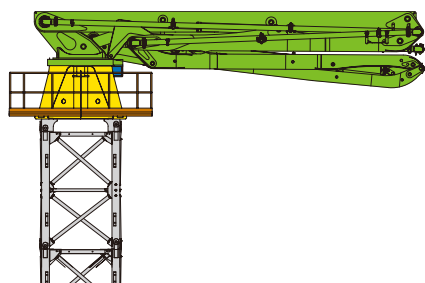
KB-M38Z



Boom type	5 Section R, Z type
Horizontal reach	36.9m
Depth reach	32.2m
Delivery line	125mm
End hose length	3.5m

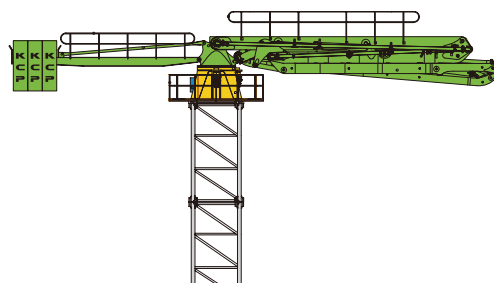
Placing booms

KB-M42RZ



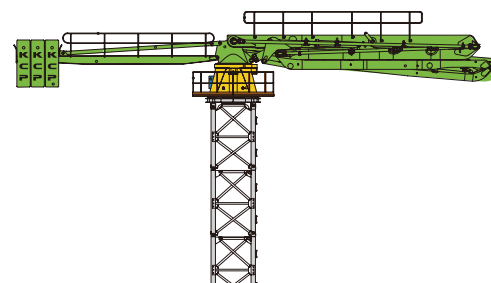
Boom type	5 Section R, Z type
Horizontal reach	40.0m
Depth reach	35.4m
Delivery line	125mm
End hose length	3.5m

KB-M52RZ



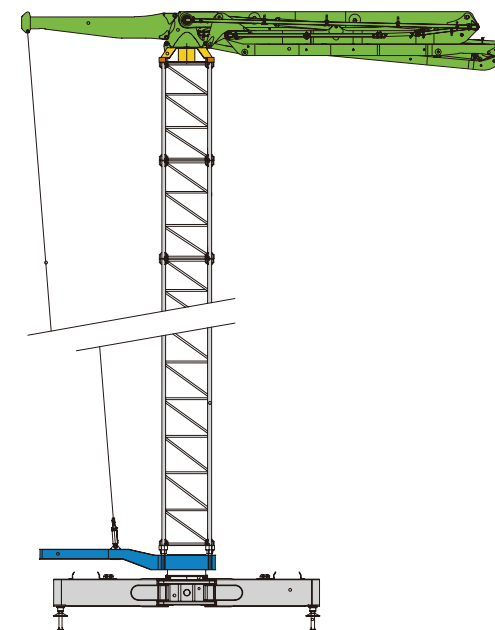
Boom type	5 Section R, Z type
Horizontal reach	50.2m
Depth reach	41.8m
Delivery line	125mm
End hose length	3.5m

KB-M56RZ



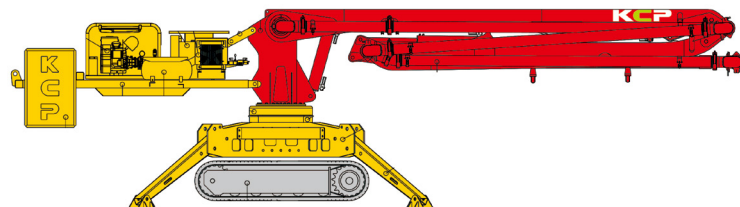
Boom type	5 Section R, Z type
Horizontal reach	53.85m
Depth reach	44.4m
Delivery line	125mm
End hose length	3.5m

KB-M60RZ



Boom type	5 Section R, Z type
Horizontal reach	55.9m
Depth reach	45.7m
Delivery line	125mm
End hose length	3.5m

KS-M15Z



Vertical reach from Ground	17.2m
Horizontal reach	14.9m
Depth reach	10.1m
Minimum Unfolding Height	5.11m
Total Weight	7,170kg

Efforts to provide advanced services

In order to provide customized services to customers around the world, KCP Co., Ltd. is researching an active and systematic service system.

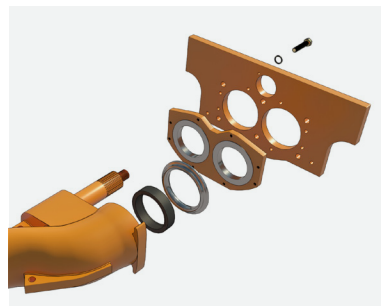
We provide technical advice, maintenance training, operating know-how, and reliable genuine accessories and parts. KCP Co., Ltd. is working to reduce customer maintenance costs through high-quality standardization and design improvement.

Service



We offer prompt maintenance services, expert advisory support, technical assistance, and a reliable supply of KCP genuine accessories and parts in 120 countries worldwide. KCP Co., Ltd. always strives to keep our customers' equipment in top condition.

Parts



KCP's genuine parts guarantee equipment quality and maximize performance and operational efficiency. We supply stable parts to maintain consistent performance at any work site.

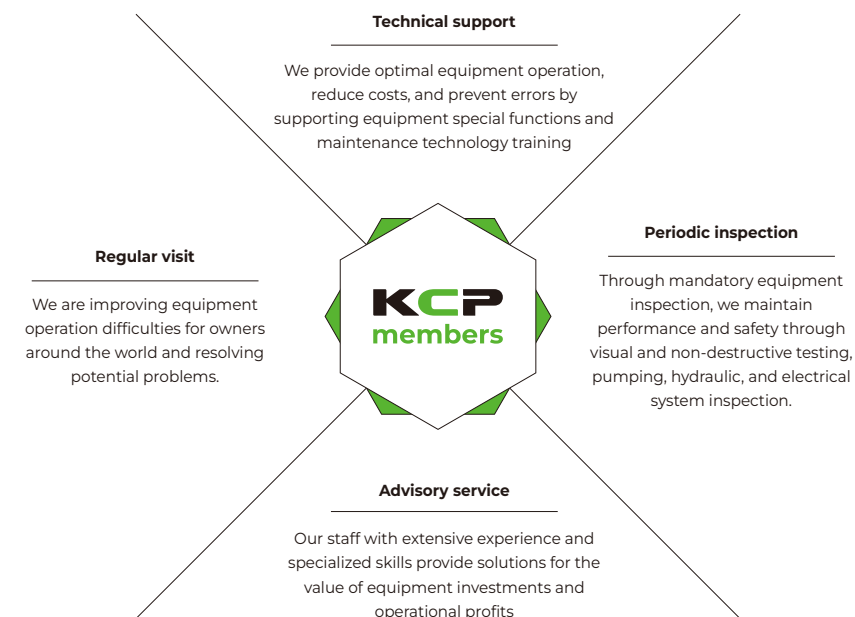
Training



Our experienced engineers provide in-depth training on equipment functions and maintenance technology, delivering systematic education and training programs to develop professional technicians and skilled equipment operators.

KCP members

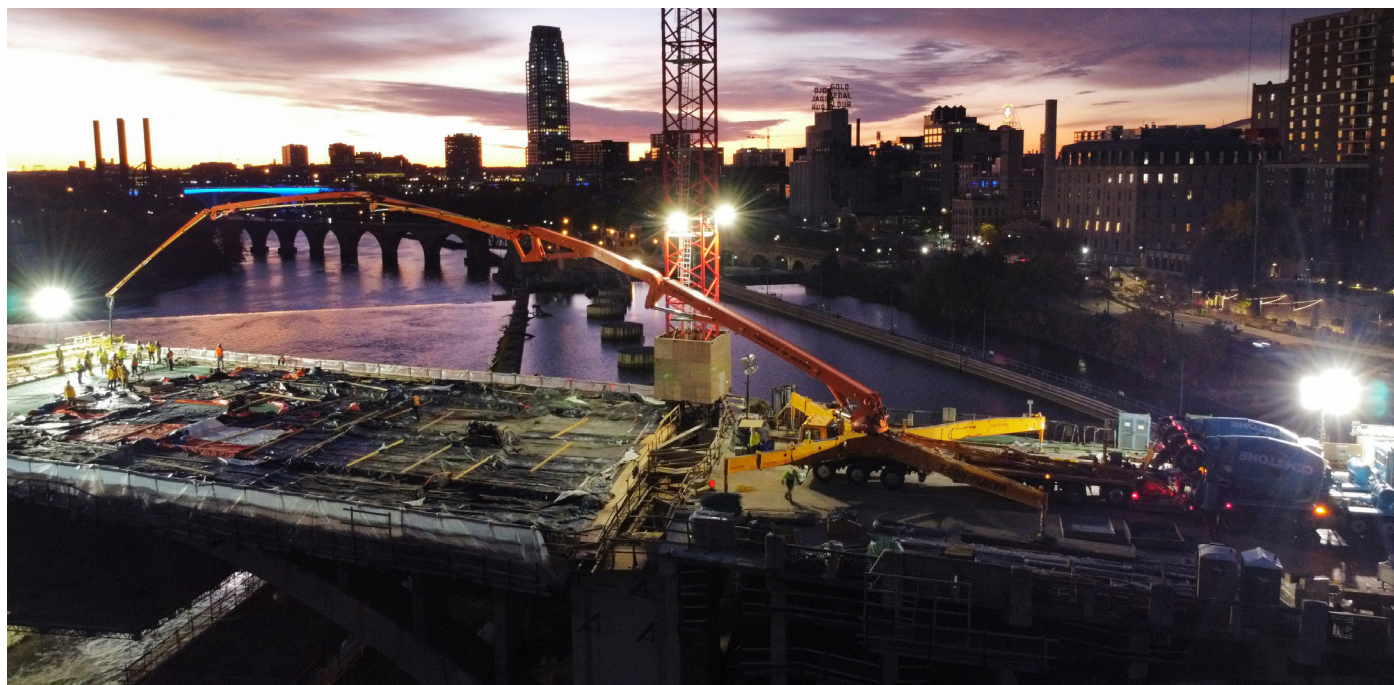
KCP members is a customer service for KCP equipment owners and dealers. We are always striving to maintain safer, superior performance and profits at our customers' industrial sites.



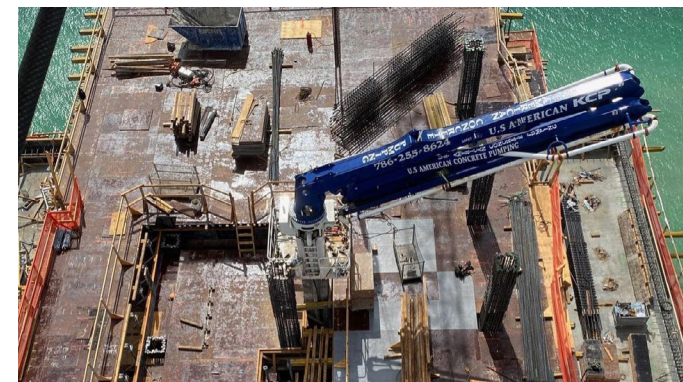
Worldwide KCP

KCP Co., Ltd., the leading concrete pump manufacturer in Korea, distributes its products to over 50 countries worldwide, renowned for their durability and reliability. Our track record speaks for itself, demonstrating consistent performance.

We remain committed to delivering the highest quality and value to our customers, ensuring their satisfaction.



United States of America



United States of America



United States of America

America



United States of America



Canada



Canada



United States of America



Canada



Argentina

Europe



United Kingdom



Spain



Portugal



Greece

Europe



Austria



Austria



Poland

Europe



Germany



Iceland



Türkiye

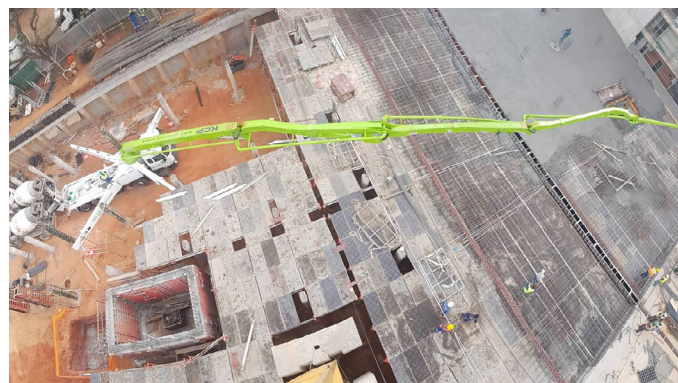
Africa/West Asia



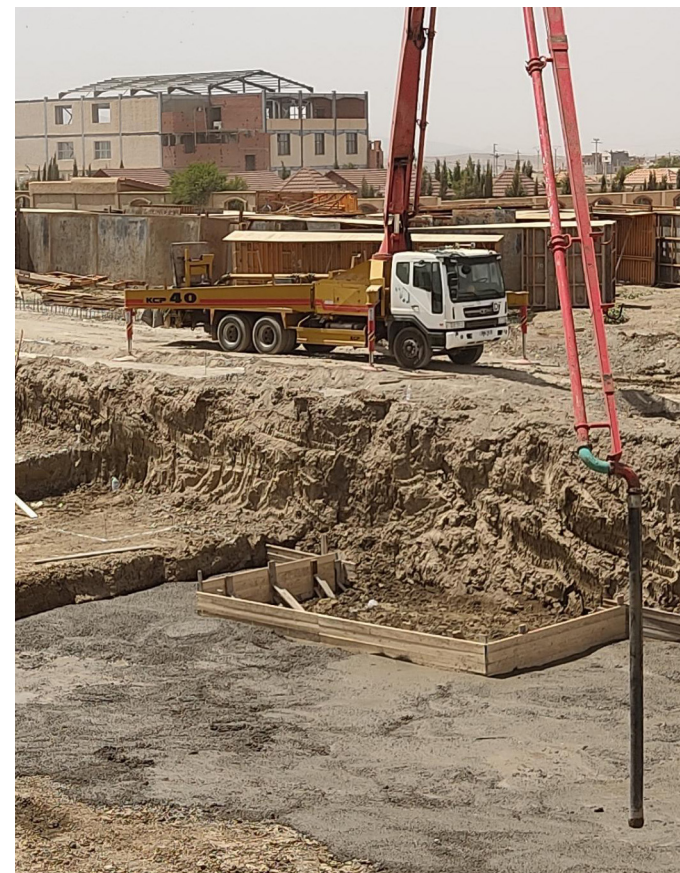
Saudi Arabia



United Arab Emirates



Republic of South Africa



Algeria

West Asia



Kuwait



Palestine



Kuwait



Israel

Oceania/East Asia



Australia



Australia



Thailand



Philippines

East Asia



Japan



Japan



Malaysia



Indonesia



Vietnam

Eurasia



Russia



Mongolia

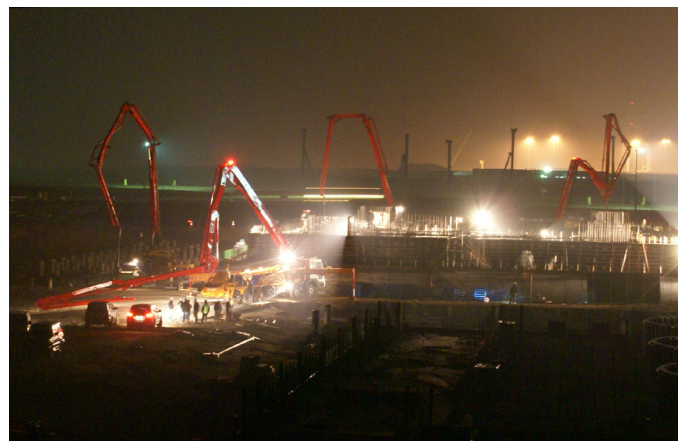
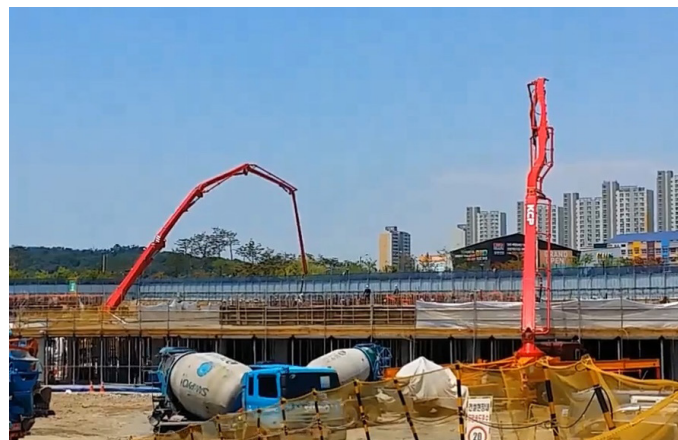


Kazakhstan



Uzbekistan

Korea





- ▶ The information and specifications provided in this brochure are subject to change without notice for the purposes of sales planning and equipment performance improvement. The photos may show optional features and may differ from the actual equipment you purchase.
- ▶ The colors of the equipment shown in the photos may vary slightly from the actual equipment due to differences in web display and printing processes.